

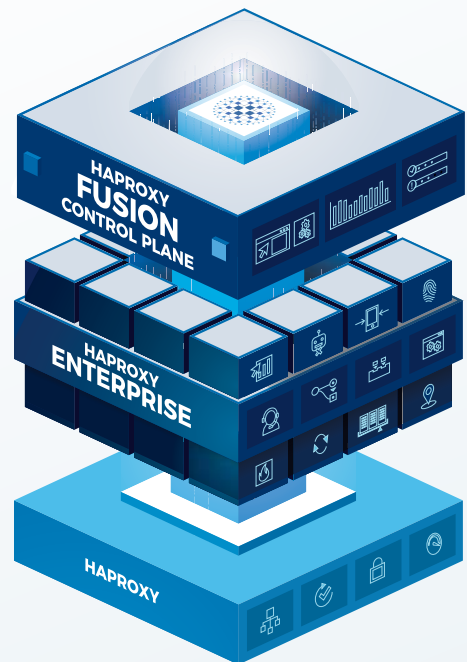
# Upgrade from HAProxy Community to Enterprise.

## Elevate Your Application Delivery With HAProxy Enterprise

**Scale** out with centralized management, monitoring, and automation.

**Secure** your infrastructure with multi-layered security modules.

**Simplify** adoption with curated packages, seamless migration, and support.



### HAProxy Community

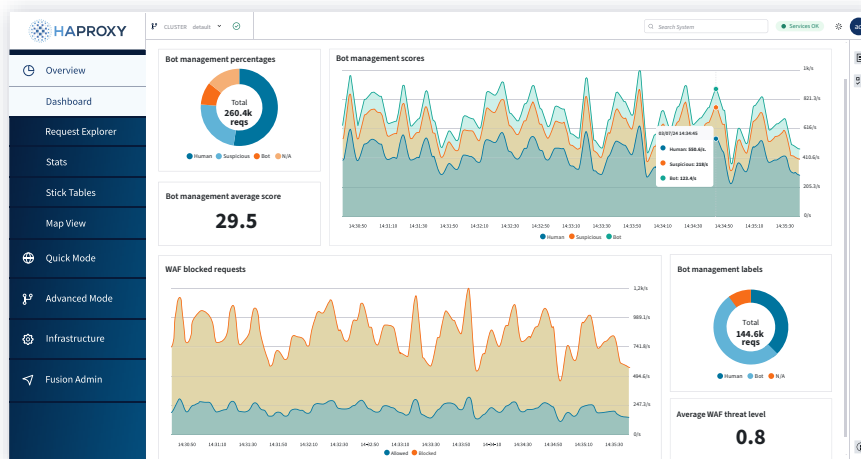
HAProxy is the world's fastest and most widely used open-source software load balancer and application delivery controller. HAProxy powers high-traffic websites worldwide and has become the de-facto standard open-source load balancer.

### HAProxy Enterprise

HAProxy Enterprise combines HAProxy with enterprise-class features, services, and premium support. HAProxy Enterprise is a powerful product tailored to the goals, requirements, and infrastructure of modern enterprises.

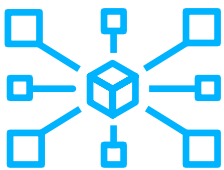
# Scalable and Observable Operation of Your Load Balancing and WAF Infrastructure

HAProxy Fusion provides a single pane of glass



## Centralized management, monitoring, and automation of HAProxy Enterprise

From small, single cluster labs to large, production environments, HAProxy Fusion supports HAProxy Enterprise deployments of any size. Administrators can manage multiple clusters of load balancers, regardless of whether they're deployed on-premises or in the cloud.



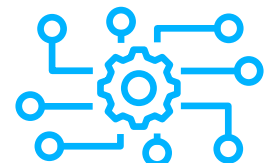
### Management

Centralized management is the cornerstone of HAProxy Fusion, enabling scalable and secure application delivery from a single pane of glass. Central management of configuration, security policy, SSL certificates, authentication, and user administration are at your fingertips.



### Monitoring

Keep track of your HAProxy Enterprise instances with unified observability, monitoring your application delivery logs, metrics, and reports all in one place. HAProxy Fusion empowers you to see all, enabling resiliency and problem-solving at both small and large scales.

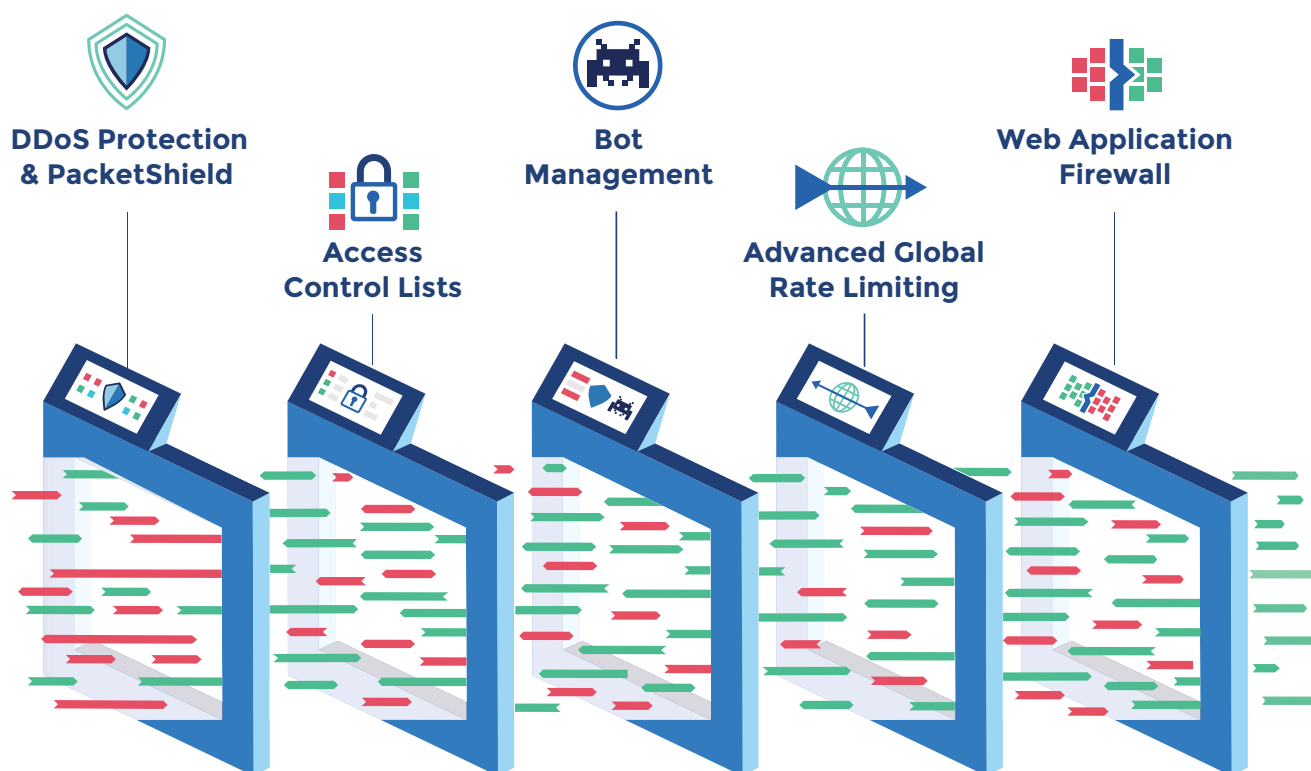


### Automation

HAProxy Fusion removes the burden of complexity, empowering app delivery teams to focus on innovation while automating their workflows. Automation increases efficiency and shortens delivery times for your web applications and APIs.

## Robust Security and Administration

HAProxy Enterprise features a suite of add-ons for advanced administration and security. Our proprietary modules extend the functionality of the open-source HAProxy without compromising on the level of performance that you've come to expect from HAProxy.

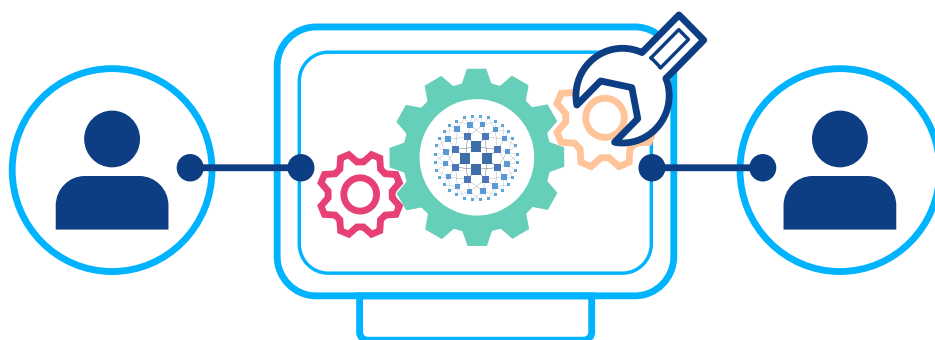


### Some of the add-ons you can expect to find are:

- ▶ Next-generation HAProxy Enterprise WAF provides exceptional balanced accuracy and optional OWASP CRS compatibility with massively-boosted performance and low false positives.
- ▶ HAProxy Enterprise Bot Management Module provides fast, reliable, and flexible bot identification with 100% local processing for low latency.
- ▶ Global Rate Limiting powered by our Global Profiling Engine provides dynamic cluster-wide tracking and enforcement to prevent abuse.
- ▶ Flexible response policies including a JavaScript challenge and a native CAPTCHA module that supports more CAPTCHA providers beyond Google reCAPTCHA.
- ▶ Automatic updates of ACL/Map files, TLS Ticket keys, device detection databases, and geolocation databases.
- ▶ RESTful configuration API with Git support.
- ▶ Native single sign-on module (SSO) for Active Directory and SAML-based identity providers like Azure Active Directory.
- ▶ Role-based access control (RBAC) with HAProxy Fusion.

# Simple Migration to HAProxy Enterprise With Premium Support

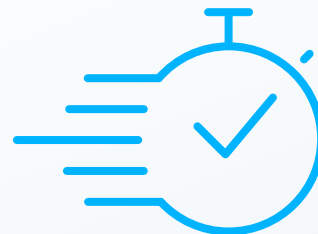
Choosing HAProxy Enterprise means choosing a support team that is always available. Whether you have a question, need product help, or want to learn more, we've got you covered.



## Authoritative Experts

Our authoritative experts ensure HAProxy's enterprise customers have access to dedicated and unmatched technical support.

Our in-depth knowledge of Linux, networking, and HAProxy means users don't have to worry about searching documentation again.



## Rapid Response Times

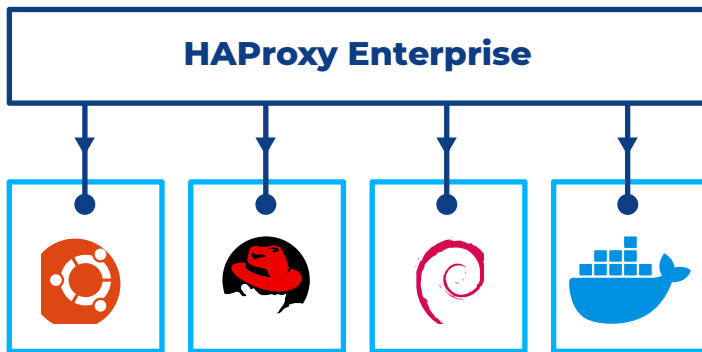
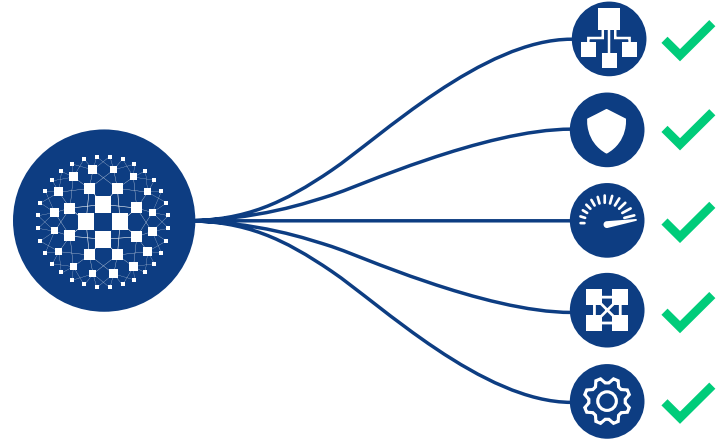
We take a proactive approach to providing support—identifying and resolving issues before they're noticeable.

Backed by 24/7 support and a follow-the-sun model, our worldwide staff quickly resolves problems across five continents and numerous time zones.

## Ease of Transition

### Transition from HAProxy to HAProxy Enterprise in just a few simple steps:

- ▶ Install HAProxy Enterprise and check configuration.
- ▶ Failover and switch to HAProxy Enterprise seamlessly.
- ▶ Repeat on other nodes.

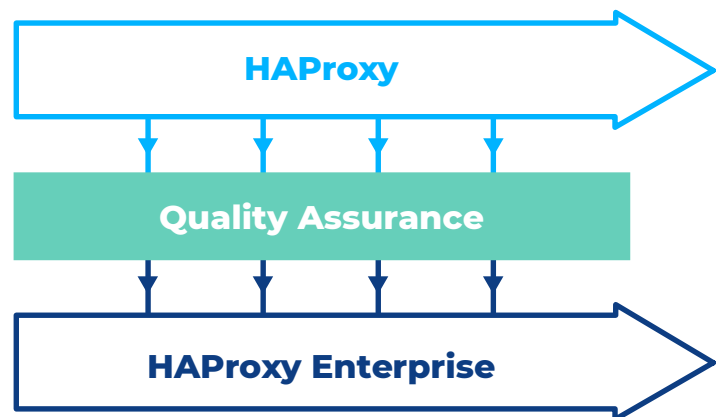


## Curated Packages

Run HAProxy Enterprise on the OS and environment of your choice. New minor releases are issued, tested, and released on a daily basis as needed, and we support popular Linux distributions, FreeBSD, Docker, AWS, and Azure. This ensures you will always be running the latest and greatest version of HAProxy Enterprise.

## Early Access to Features

New features are frequently vetted by our thorough QA process and then moved into the latest HAProxy Enterprise stable version so that you get them quicker.



# Feature Comparison Table

Contact us if you have specific requirements.

FEATURES COMPARISON	HAProxy Enterprise	HAProxy
TCP and HTTP Load Balancing	✓	✓
UDP Load Balancing	✓	Syslog only
Log Forwarding	✓	✓
Simple but Powerful Configuration	✓	✓
HAProxy Data Plane API	✓	✓
HTTPS Termination	✓	✓
Docker Images	✓	✓
Email Alert Notifications	✓	✓
Service Discovery Integration (DNS, Consul, AWS EC2)	✓	✓
Customization (Lua, Stream Processing Offload Engine)	✓	✓
Weighted Traffic Routing	✓	✓
Traffic Inspection and Restriction (ACLs)	✓	✓
HTTP Rewrites and Redirects	✓	✓
Request Rate Limiting	✓	✓
HTTP Caching	✓	✓
Queuing for Server Overload Protection	✓	✓
HTTP Compression	✓	✓
Automated OCSP Stapling	✓	✓
Linux Packages	✓	✓
Device Detection Modules	✓	✓
Technical Support	✓	✗
HAProxy Fusion Control Plane	✓	✗
HAProxy Enterprise WAF	✓	✗
HAProxy Enterprise Bot Management Module	✓	✗
Cloud Images (AWS, Azure)	✓	✗
High Availability Modules (Active/Active, Active/Standby)	✓	✗
Synchronize Map, ACLs, and TLS Ticket Keys Across Load Balancers	✓	✗
CAPTCHA Module	✓	✗
SAML Module (Authentication)	✓	✗
Geolocation Modules	✓	✗
ADFSPiP Module	✓	✗
Traffic Mirroring	✓	✗